

Pipeline Research – MMS Perspective



elmer.danenberger@mms.gov

MMS Studies & Research Programs

Risk Management Programmatic Tools

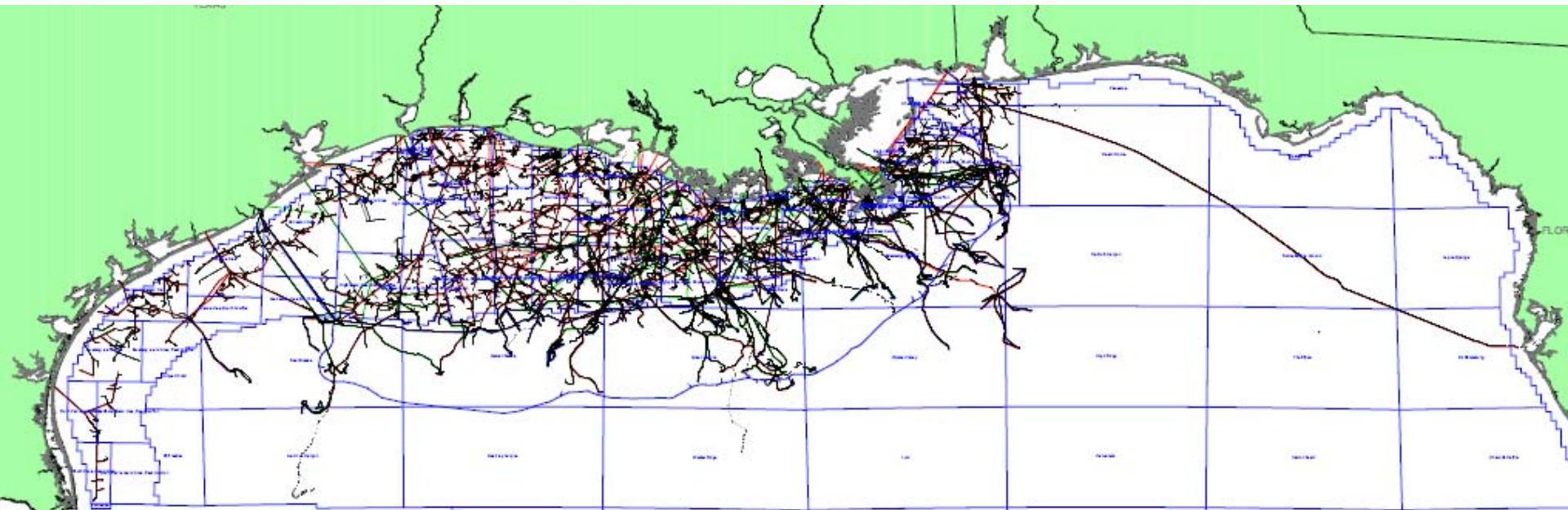


- **Technology Assessment & Research Program**
 - Operational Safety & Engineering Research
 - Oil Spill Research
- **Environmental Studies Program**
 - Physical Oceanography
 - Biological Sciences



GOM Pipeline Figures

- 17,715 segments installed in GoM
- 45,306 miles of pipelines installed
- 1,215 segments reported damaged from 2006-2008



MMS Areas of Interest

- Hurricanes/mudslides
- Platform-PL interface; risers
- Subsea processing; seafloor architecture
- Flow assurance
- Arctic design considerations
- Deepwater installation/repairs
- Corrosion prevention and monitoring
- Leak detection
- Shutdown valves
- HIPPS





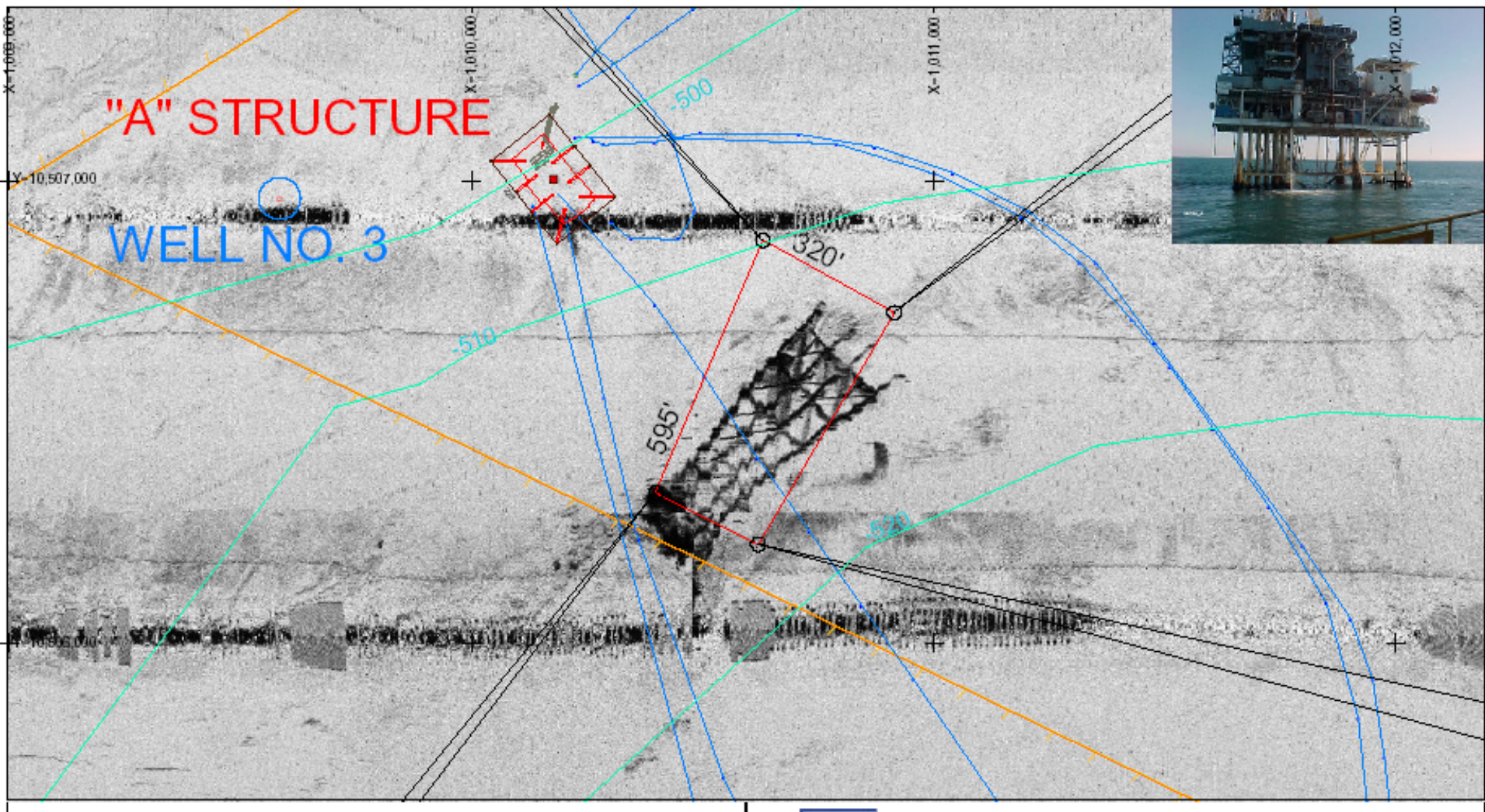
Noble Max Smith
prior location: GC 282
found: Vermillion 78
September 26, 2005



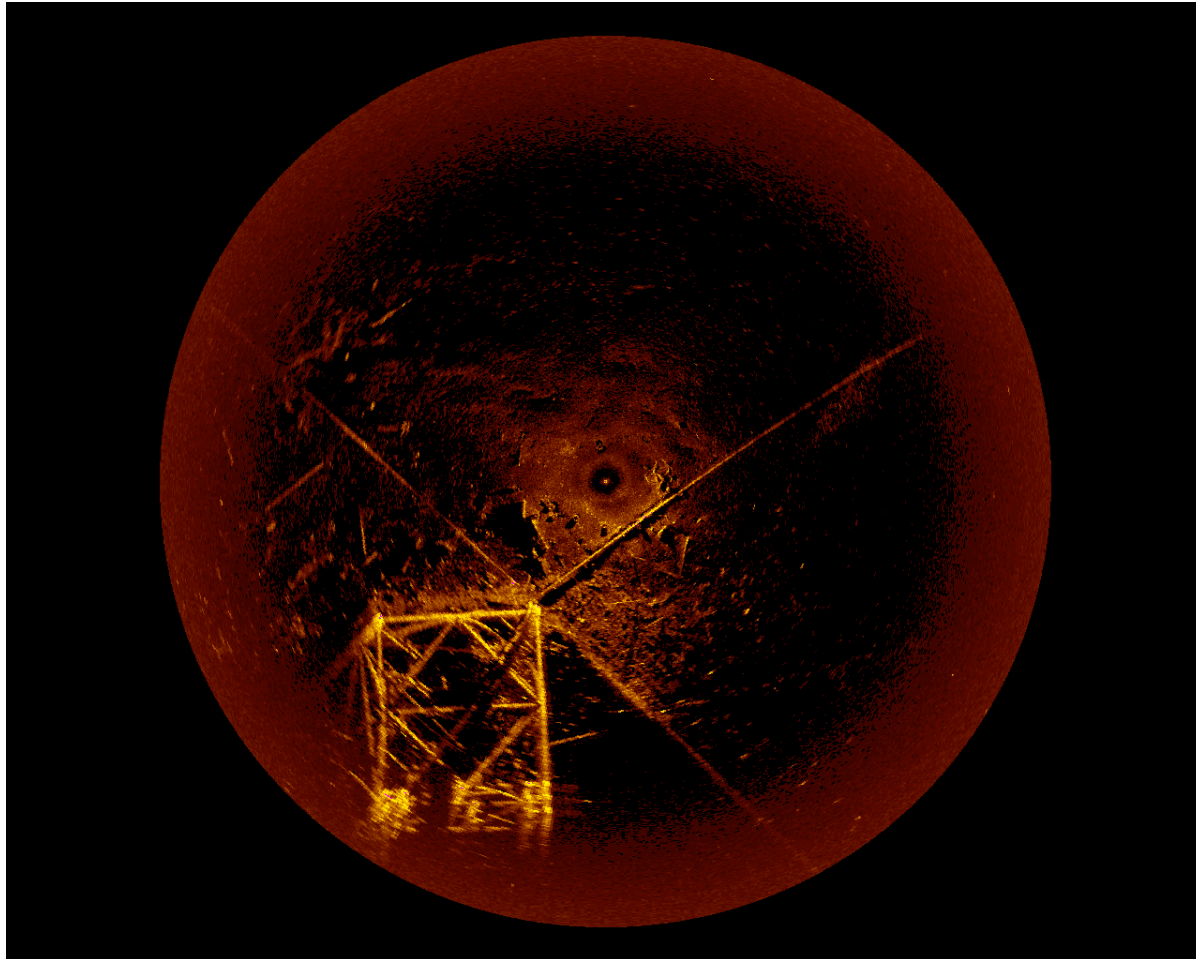
Mississippi River

New Orleans

Mississippi River
Delta

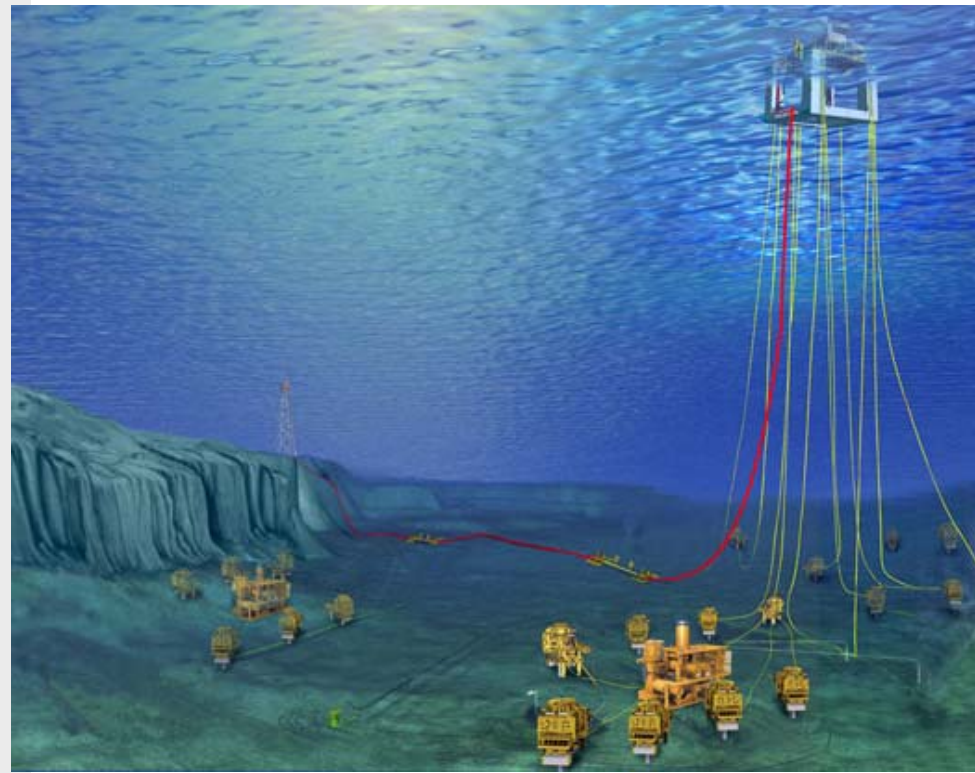


Sonar Image at MP 144



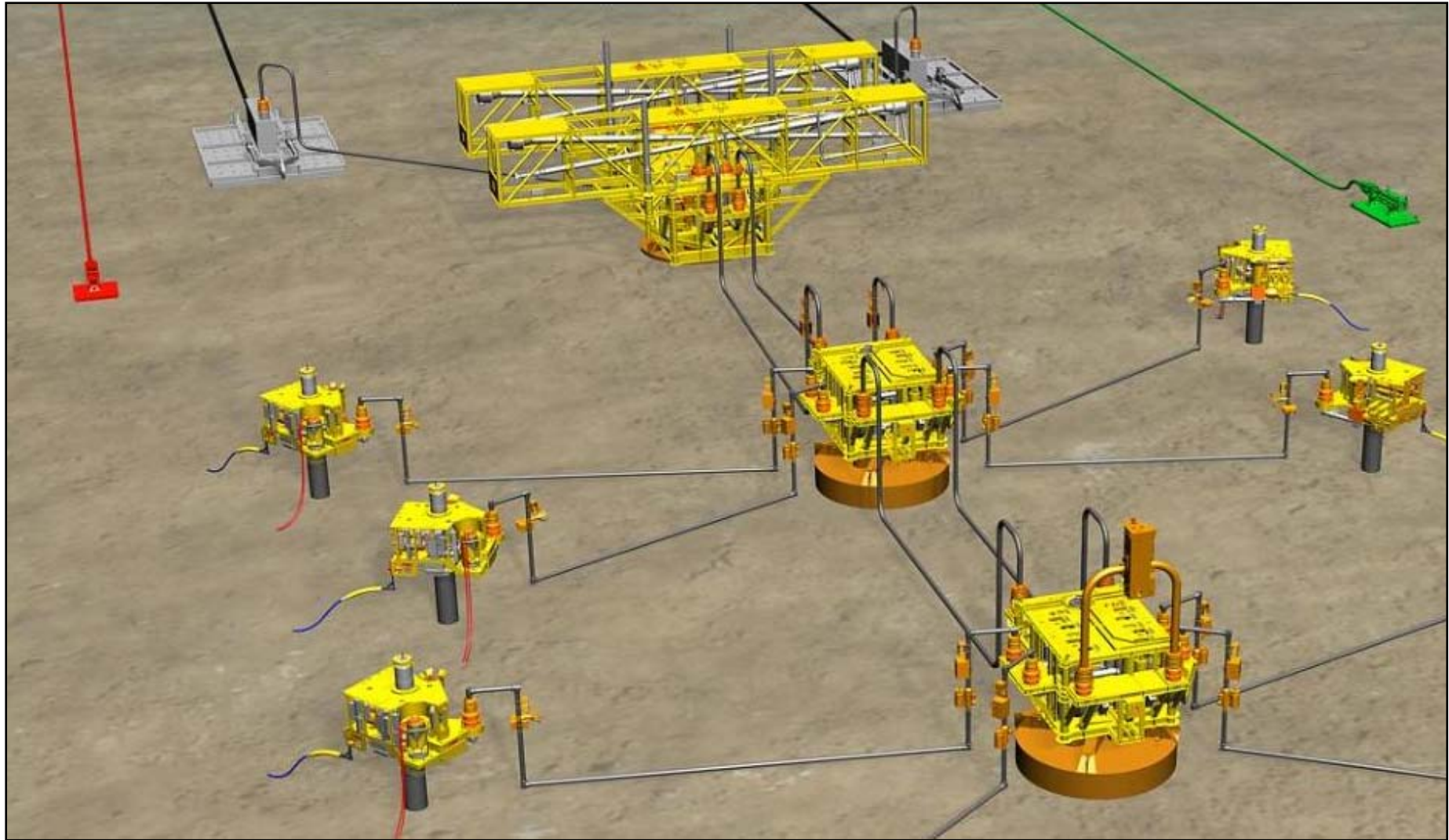


20" Export Flex-Joint Operation



Deepwater Risers – Still Learning

Chinook Phase II Manifold and Pump Station





“Not My Job” Award Winner



Shut-in By MMS on 6/10/09



MAOP of 1200 psi; 1000 psi at the time